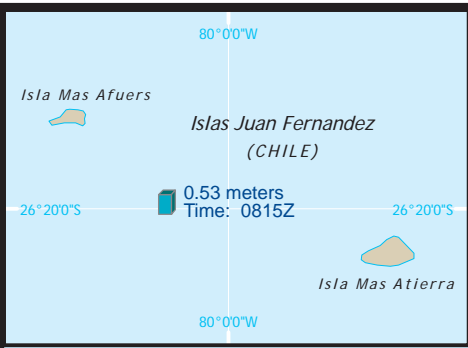


# EARTHQUAKE-AFFECTED AREAS IN CHILE AND ARGENTINA



**KEY**

**USAID/OFDA**

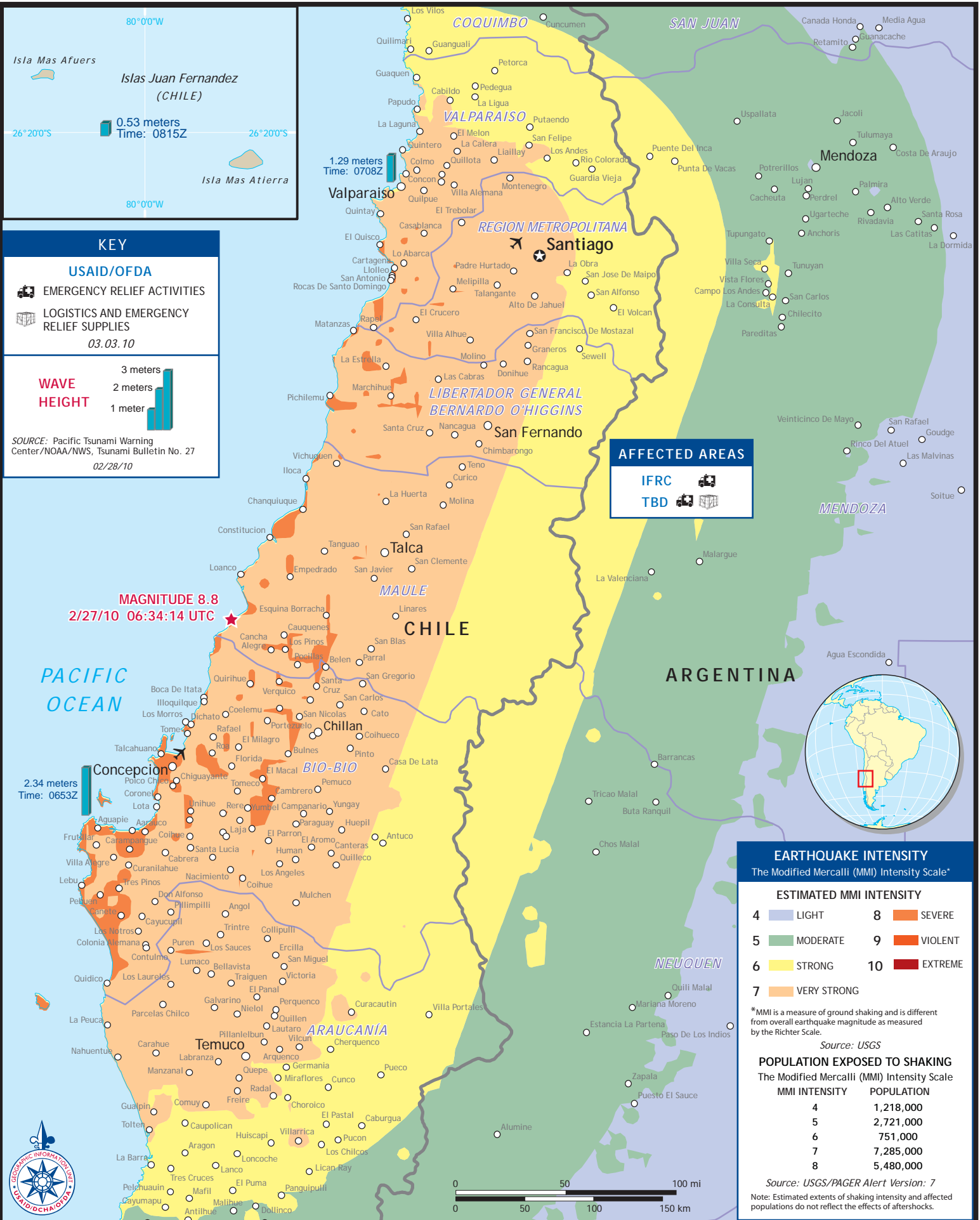
- EMERGENCY RELIEF ACTIVITIES
- LOGISTICS AND EMERGENCY RELIEF SUPPLIES

03.03.10

**WAVE HEIGHT**

3 meters  
2 meters  
1 meter

SOURCE: Pacific Tsunami Warning Center/NOAA/NWS, Tsunami Bulletin No. 27  
02/28/10



**AFFECTED AREAS**

- IFRC**
- TBD**

**MAGNITUDE 8.8**  
2/27/10 06:34:14 UTC

**EARTHQUAKE INTENSITY**  
The Modified Mercalli (MMI) Intensity Scale\*

ESTIMATED MMI INTENSITY			
4	LIGHT	8	SEVERE
5	MODERATE	9	VIOLENT
6	STRONG	10	EXTREME
7	VERY STRONG		

\*MMI is a measure of ground shaking and is different from overall earthquake magnitude as measured by the Richter Scale.  
Source: USGS

**POPULATION EXPOSED TO SHAKING**  
The Modified Mercalli (MMI) Intensity Scale

MMI INTENSITY	POPULATION
4	1,218,000
5	2,721,000
6	751,000
7	7,285,000
8	5,480,000

Source: USGS/PAGER Alert Version: 7  
Note: Estimated extents of shaking intensity and affected populations do not reflect the effects of aftershocks.

# Satellite Imagery Observations

## Chile Earthquake and Tsunami - Bay of Concepción

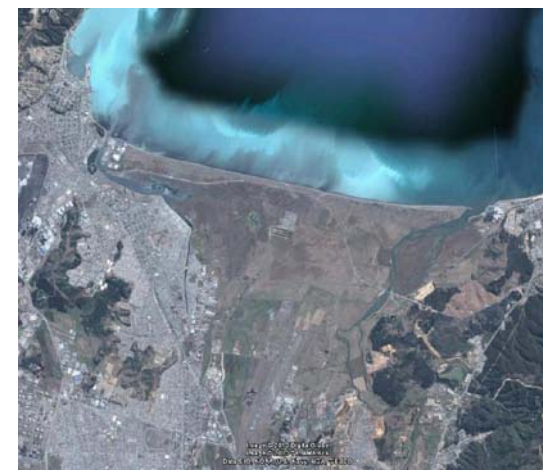
Image shows coastal inundation and floating debris.



**USAID**  
FROM THE AMERICAN PEOPLE

36°44'50.47"S 73° 3'24.30"W

### Pre-Event Imagery



### Locator Map



Copyright Rapideye 2010  
Imagery Date: 2/27/2010

Produced by: Geographic Information Unit  
Office of Foreign Disaster Assistance  
U.S. Agency for International Development  
Imagery provided by Google & Geoeye  
Post Event Image Date: February 27, 2010  
Pre Event Image Date: Unknown  
GLIDE #: TS-2010-000035-CHL  
Produced: March 2, 2010